

Use of Gasolen technologie

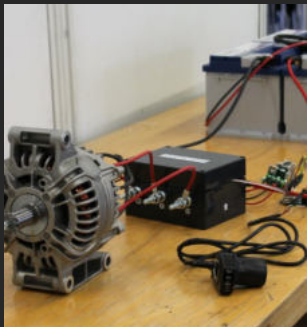
Below you can see an example of how it is possible to use Gasolen technology.

In our example, we installed the system in an old Piaggio APE.

If you want to build your own vehicle with our system you can use our "guide" as an example. Hopefully it will help you with brainstorming or problems that arise during the process.



1 Our System



Check out how our system works

2 Dismantling of the differential



In this step we will show you how we removed the old differential of the ape motor in order to use it for our new drive

3 Assembly of the solar cell



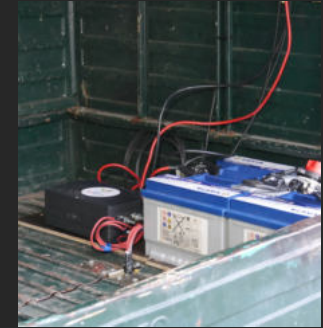
Here you can see how we attached the solar cells to the old APE body. Thanks to the solar cells it is possible to charge the used batteries

4 Installation of the drive



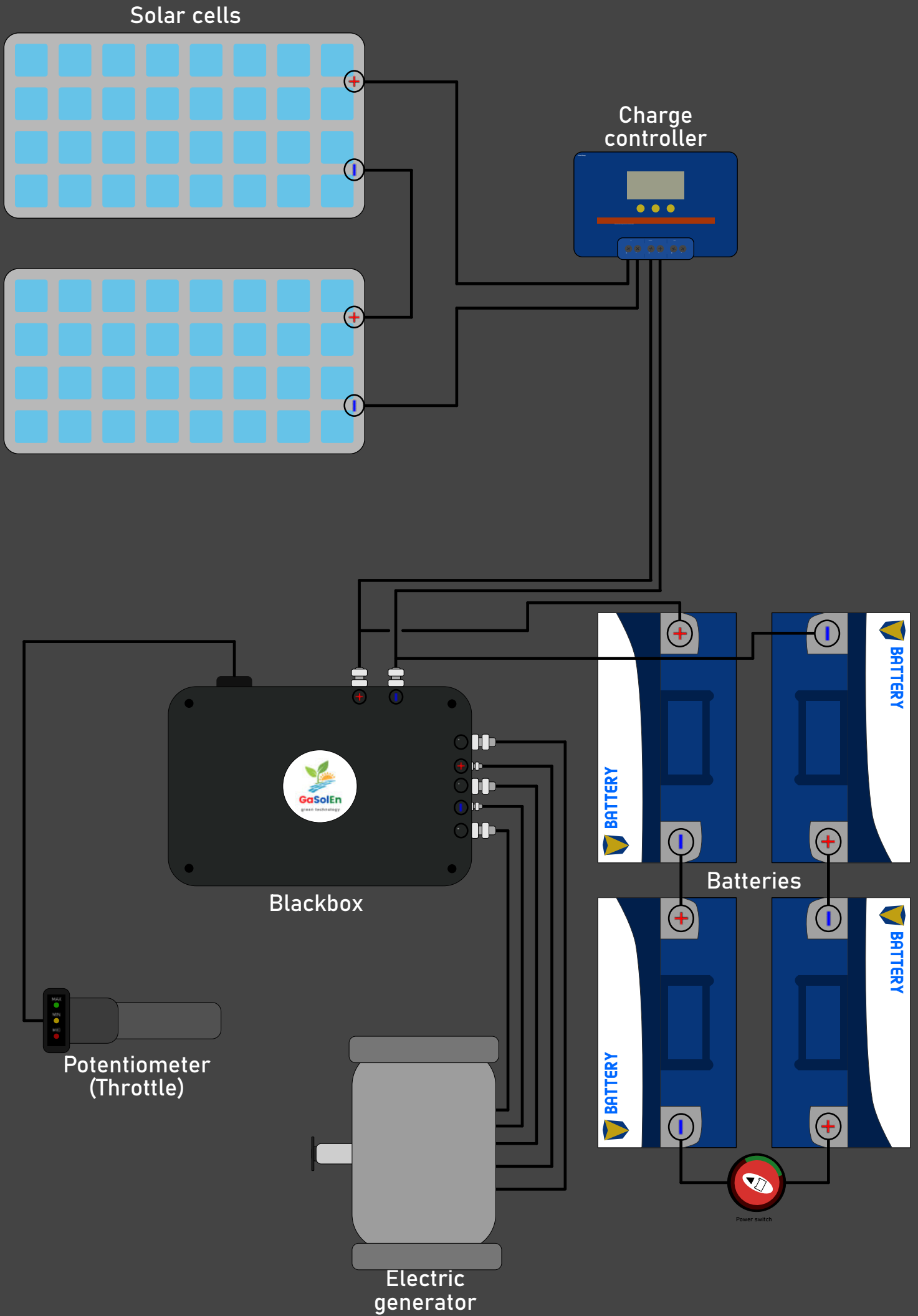
In this step we will show you how we installed the generator and connected it to the old drive system

5 Installation of the system



Check out how we installed the system into the interior of the Piaggio APE

Our System



Our System

Technology we used:

- Blue solar PWM Charge Controller-LCD-USB 48V|20A



- 2x Q-Cells PV-Modul



- BlackBox
- 4x 12V Varta D59 (battery)



- Potentiometer (throttle)



Dismantling of the differential

1



2



Drain oil

3



Unscrew the marked screws and remove the casing

4



dismantle gears

5



Unscrew the screws located inside the casing

6



Remove the rest of the casing

Assembly of the solar cells

1



Drill a hole for the cables at the position shown in figure 2

2



3

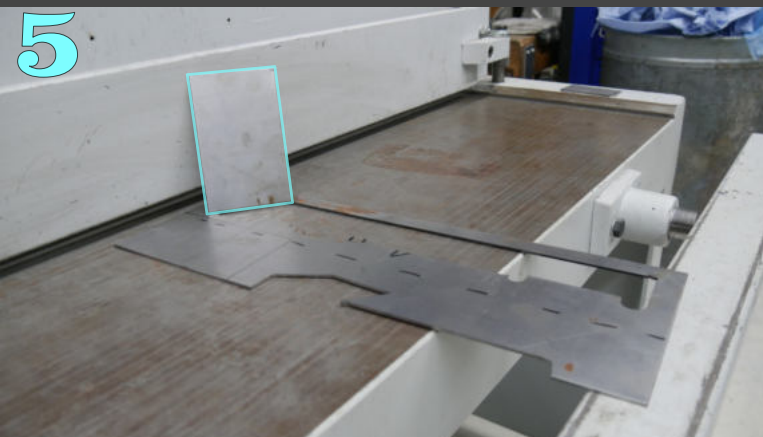


4



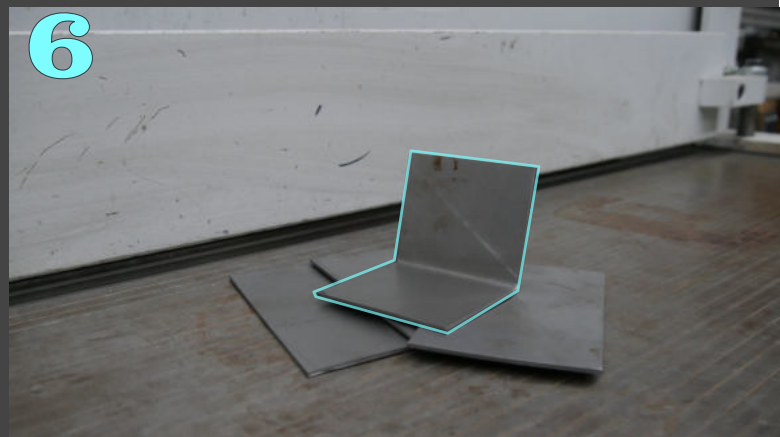
Fed the solar cell cables through the drilled hole and seal up the hole

5



For mounting the solar cells we used sheet metal

6



Bend the sheet metal to the correct angle

7

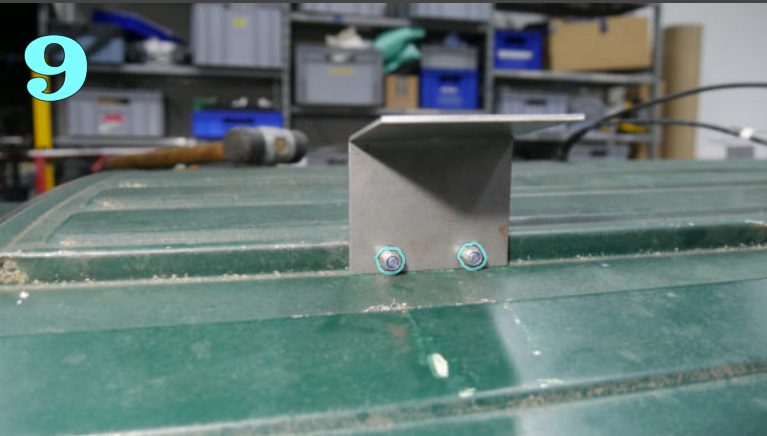


8



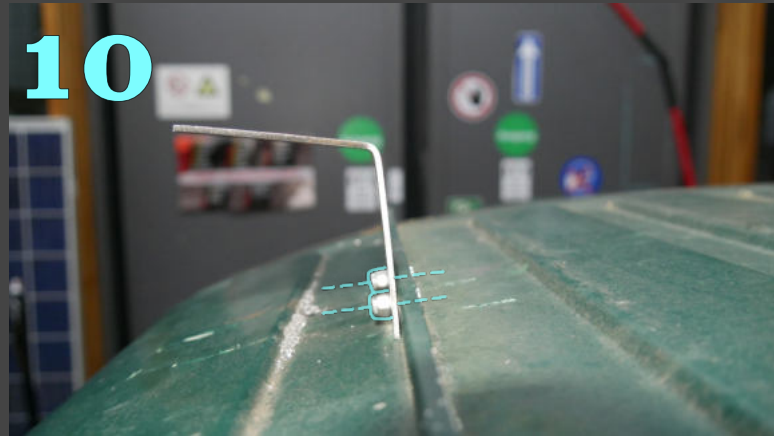
Holes for roof bolting

9



Screw to roof

10

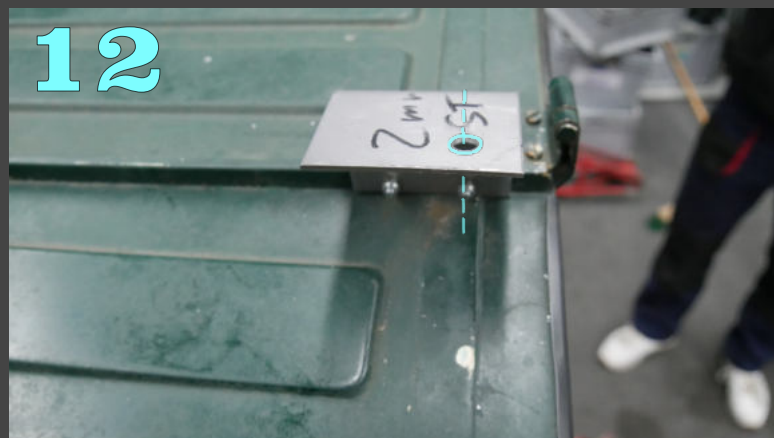


11

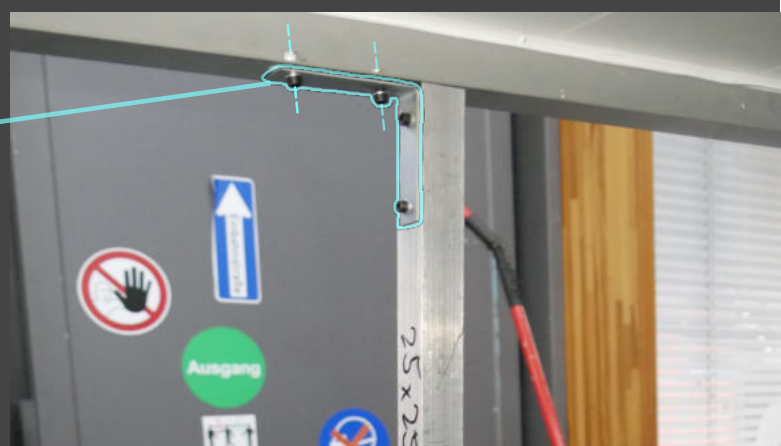
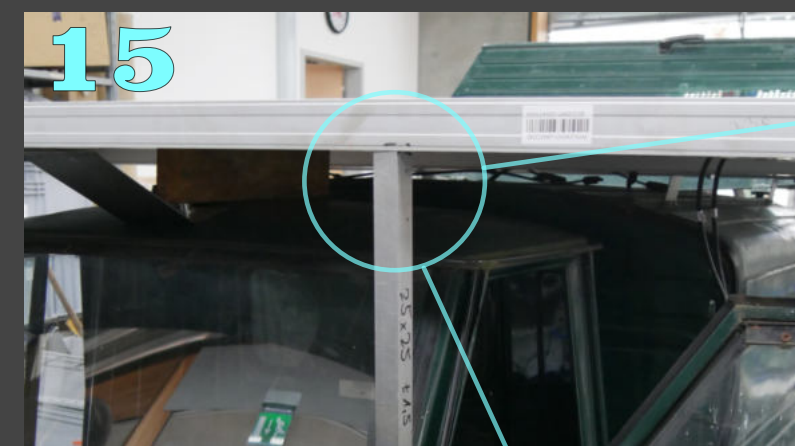
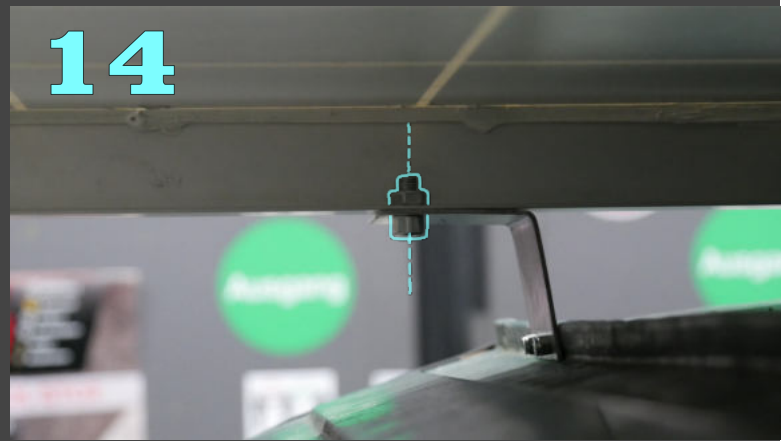


The same four times

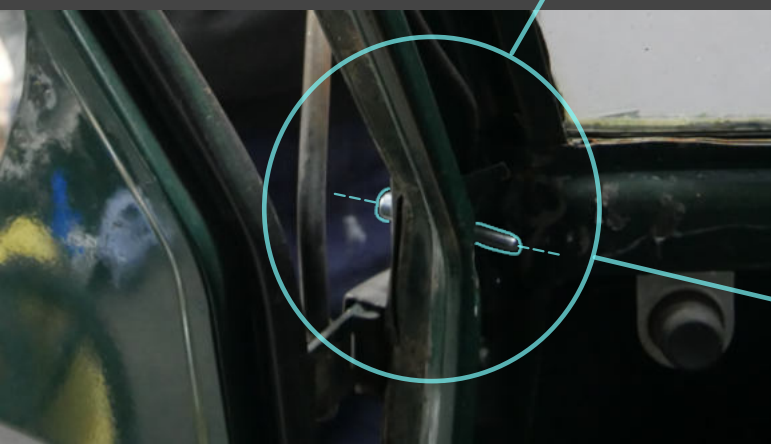
12



Drill a hole to attach the solar cells as shown in Figure 14

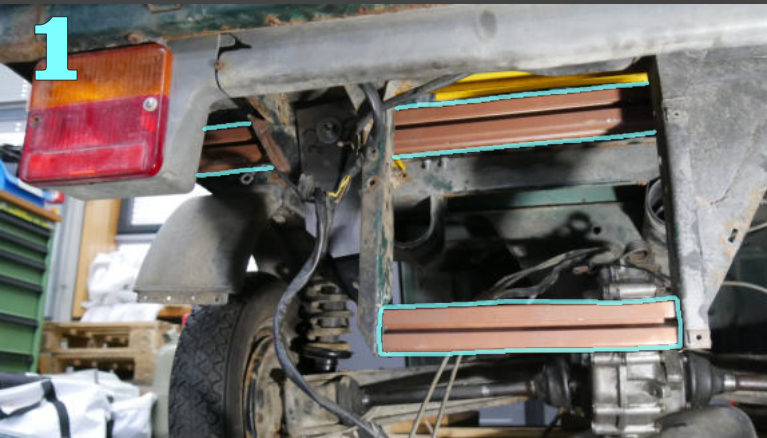


Because of the small roof we attached two stanchions to the front



Installation of the drive

1

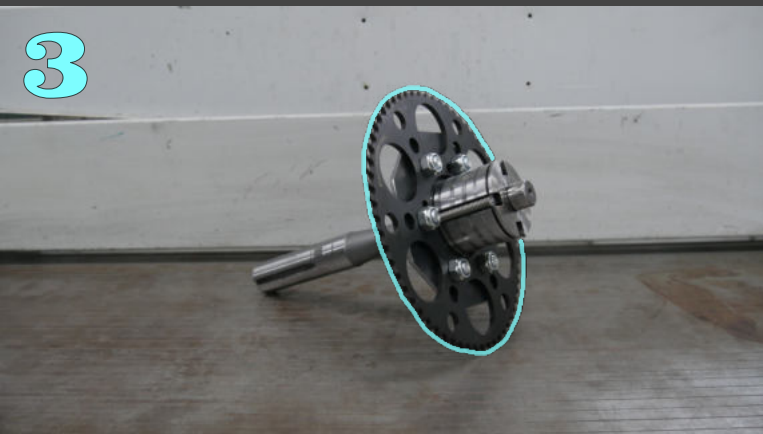


First we built a frame for the generator.

2

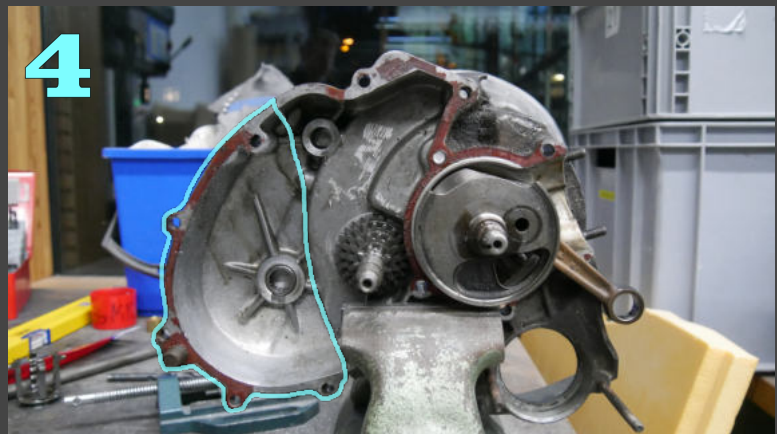


3



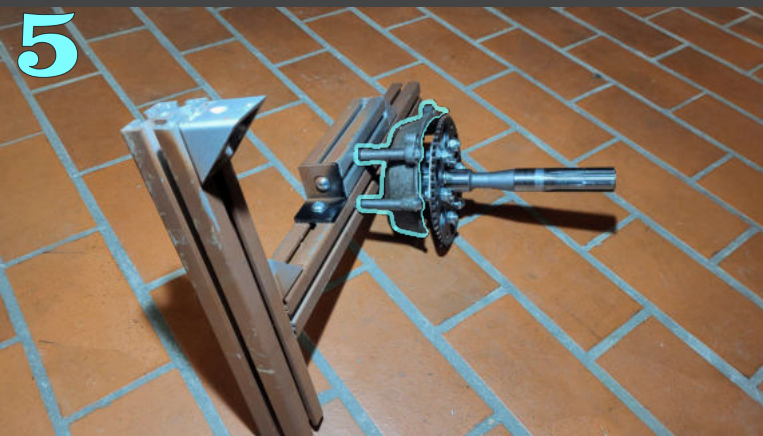
To transfer the power from the generator to the old drive system we attached a gear to the driveshaft

4

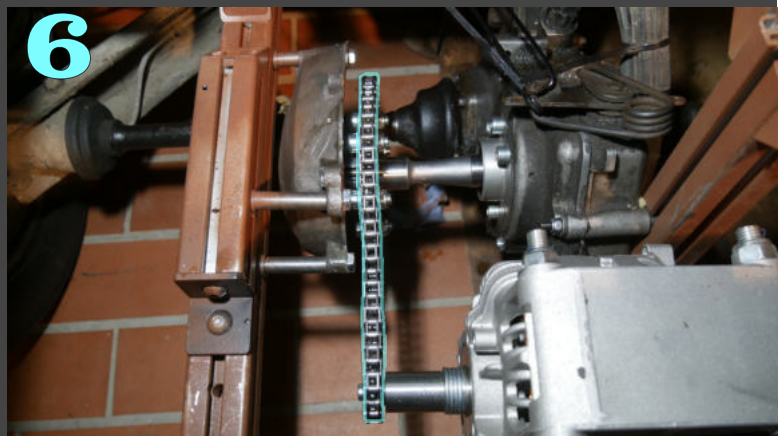


To mount the driveshaft we cut the old bearing out of the motor

5



6



We use a chain to transmit the power

Installation of the system

In this section we will show you how we have safely accommodated the system in our vehicle

1



First, we fixed the charge controller in such a way that it is easy to reach

2



Next we screwed a wooden board into the interior as base

3



Thanks to the base, we can now screw the blackbox onto the board

4



To fix the batteries we built a frame and use clamps

5

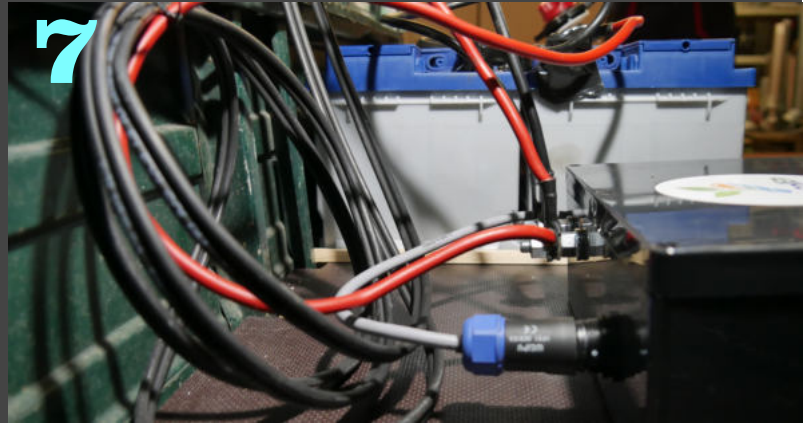


6



For the potentiometer we simply replaced the old throttle

7



The last step was to leave all cables tidy and connect all the built-in technologies.
For that you can simply use the 2d-model from chapter 1 "Our System"